

# Техническое описание продукта HE 35 W/830

LUMILUX T5 HE | Трубчатые люминесцентные лампы T5 High Efficiency, цоколь G5



- Public buildings Offices Shops Supermarkets and department stores Industry Outdoor applications only in suitable luminaires

- Good economy and efficiency Up to 20 % more economical than LUMILUX T8 Up to 50 % smaller volume than comparable T8 lamps



## Техническое описание продукта

### Technical data

#### Электрические параметры

ZLDV_Nominal current [AGGR]	0.18 A A
-----------------------------	----------

#### Фотометрические данные

ZLDV_Luminous flux at 35 °C [AGGR]	3550 lm
ZLDV_Light color (designation) [AGGR]	LUMILUX Warm White
ZLDV_Rated LLMF at 2,000 h [AGGR]	0.95
ZLDV_Rated LLMF at 4,000 h [AGGR]	0.93
ZLDV_Rated LLMF at 6,000 h [AGGR]	0.92
ZLDV_Rated LLMF at 8,000 h [AGGR]	0.9
ZLDV_Rated LLMF at 12,000 h [AGGR]	0.9
ZLDV_Rated LLMF at 16,000 h [AGGR]	0.9
ZLDV_Rated LLMF at 20,000 h [AGGR]	0.89
ZLDV_Luminous flux [AGGR]	3550 lm

#### Размеры и вес



ZLDV_Tube diameter [AGGR]	16 mm
ZLDV_Length with base excl. base pins/connection [AGGR]	1449 mm
ZLDV_Product weight [AGGR]	116.45 g
ZLDV_Overall length [AGGR]	1463.20 mm

#### Срок службы

ZLDV_Service life [AGGR]	19000 h
--------------------------	---------

#### Дополнительные данные

ZLDV_Mercury content [AGGR]	1.5 mg
-----------------------------	--------

## Техническое описание продукта

ZLDV_Product remark [AGGR]	Suitable for ECG operation only   Lamp designed for internal luminaire temperatures of 30...40 °C; optimum luminous flux achieved at 35 °C
Утилизация по WEEE	Да
Последующая модель EAN	4050300591469
Последующая модель EAN	4050300464763

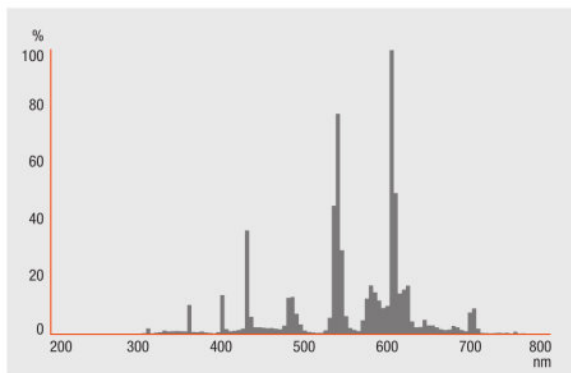
## Сертификаты и Стандарты

ZLDV_Energy efficiency class [AGGR]	F
ZLDV_Energy consumption [AGGR]	35.00 kWh/1000h

## Environmental information

Information according Art. 33 of EU Regulation (EC) 1907/2006 (REACH)	
Date of Declaration	18-04-2022
Primary Article Identifier	4050300591469   4050300464763
Declaration No. in SCIP database	In work

## Распределение силы света

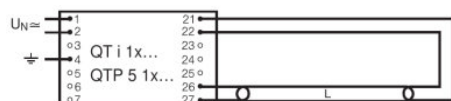


FL\_830

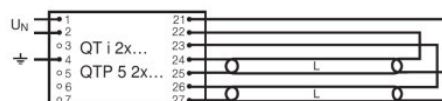
## Техническое описание продукта

### Системная гарантия

Расширенная системная гарантия OSRAM в сочетании с ЭПРА OSRAM



QUICKTRONIC INTELLIGENT QT i 1x QTP 5 1x



QUICKTRONIC INTELLIGENT QT i 2x QTP 5 2x

### Ecodesign regulation information:

Separate control gear and light sources must be disposed of at certified disposal companies in accordance with Directive 2012/19/EU (WEEE) in the EU and with Waste Electrical and Electronic Equipment (WEEE) Regulations 2013 in the UK. For this purpose, collection points for recycling centres and take-back systems (CRSO) are available from retailers or private disposal companies, which accept separate control gear and light sources free of charge. In this way, raw materials are conserved and materials are recycled.

### Данные для заказа

Product code	Описание продукта	Упаковка (цена/шт.)	Размеры (длина x ширина x высота)	Объем	Вес брутто
4050300464763	HE 35 W/830	Shipping carton box 40 шт. Unpacked	1500 mm x 93 mm x 194 mm	27.06 дм <sup>3</sup>	6258.00 g

The mentioned product code describes the smallest quantity unit which can be ordered. One shipping unit can contain one or more single products. When placing an order, for the quantity please enter single or multiples of a shipping unit.

### Ссылки

Более подробную информацию по системной гарантии и положениям и условиям гарантийного обслуживания см. на странице <https://>

▶ [www.inventronics-light.com/multilevel-guarantees](https://www.inventronics-light.com/multilevel-guarantees)

## Техническое описание продукта

---

### Примечание

Subject to change without notice. Errors and omission excepted. Always make sure to use the most recent release.

OSRAM is distribution partner  
of LEDVANCE of LAMPS

**OSRAM**

OSRAM GmbH  
Marcel-Breuer-Strasse 6  
80807 Munich, Germany

## HE 35 W/830

LUMILUX T5 HE | Трубчатые люминесцентные лампы T5 High Efficiency, цоколь G5

Название продукта	Название продукта ЭПРА	EAN-код	Номинальный ток	Потери мощности	Световой поток при 35 °C	Число горелок
HE 35 W/830	QT-FIT 5 1x14-35	4008321971234	0.17 A	38.00 Вт	3200 лм	1
	QT-FIT 5 2x14-35	4008321971258	0.35 A	78.00 Вт	3300 лм	2
	QTi 1x14/24/21/39 GII	4008321383334	0.18 A	39.00 Вт	3300 лм	1
	QTi 1x28/54/35/49 GII	4008321383358	0.17 A	38.00 Вт	3300 лм	1
	QTi 1x35/49/80 GII	4008321383372	0.17 A	38.00 Вт	3300 лм	1
	QTi 2x14/24/21/39 GII	4008321383396	0.35 A	76.00 Вт	3300 лм	2
	QTi 2x28/54/35/49 GII	4008321383419	0.35 A	76.00 Вт	3300 лм	2
	QTi 2x35/49/80 GII	4008321658951	0.36 A	77.00 Вт	3400 лм	2
	QTi DALI 2x35/49 DIM	4050300870403	0.33 A	74.50 Вт	3300 лм	2
	QTP5 1x14-35	4008321329035	0.17 A	38.00 Вт	3300 лм	1
QTP5 2x14-35	4008321329073	0.33 A	75.00 Вт	3300 лм	2	